

# Resources Needed for Successful Community- Based Translation

## Morehouse School of Medicine/Emory University Community Engagement and Research Program (CERP)

Daniel S. Blumenthal, MD, MPH  
Professor and Chair  
Community Health and Preventive Medicine  
Morehouse School of Medicine



Atlanta Clinical & Translational  
Science Institute

# Disclosures

***Accelerating the Dissemination and Translation of  
Clinical Research into Practice***

**The Following Faculty have No Relevant Financial Relationships  
with Commercial Interests**

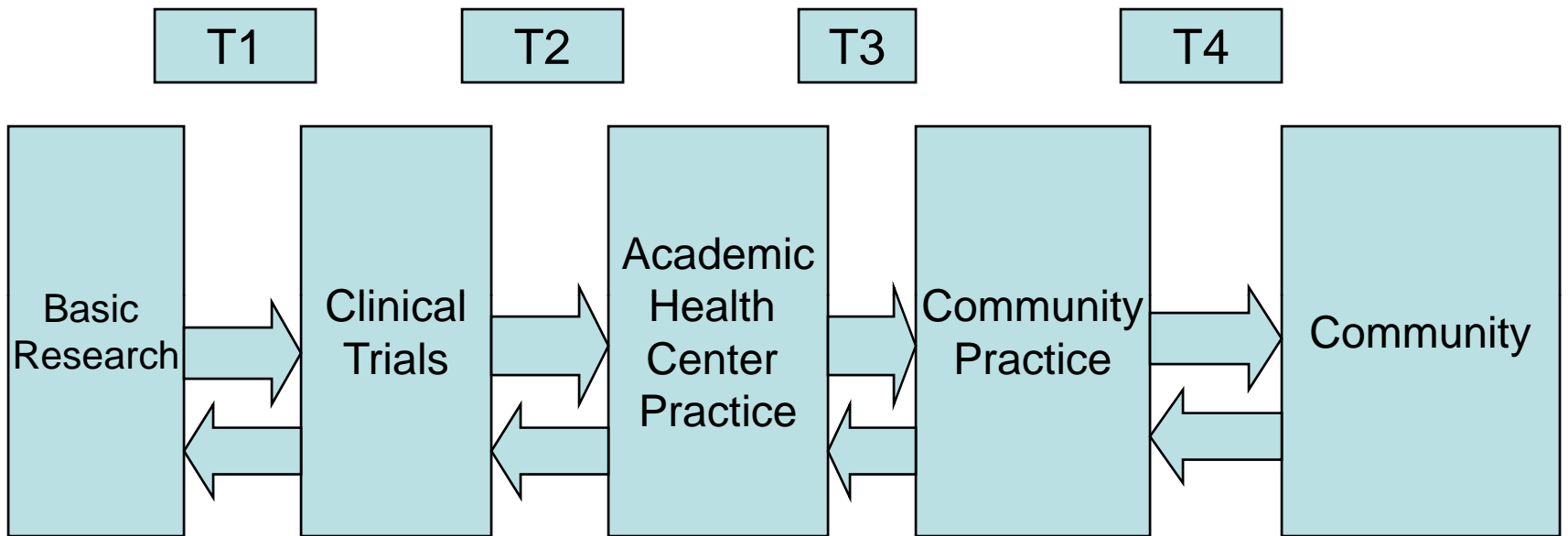
**Dr. Daniel Blumenthal**

Panel Discussion III: Resources Needed for Successful  
Community Based Translation



Atlanta Clinical & Translational  
Science Institute

# CERP

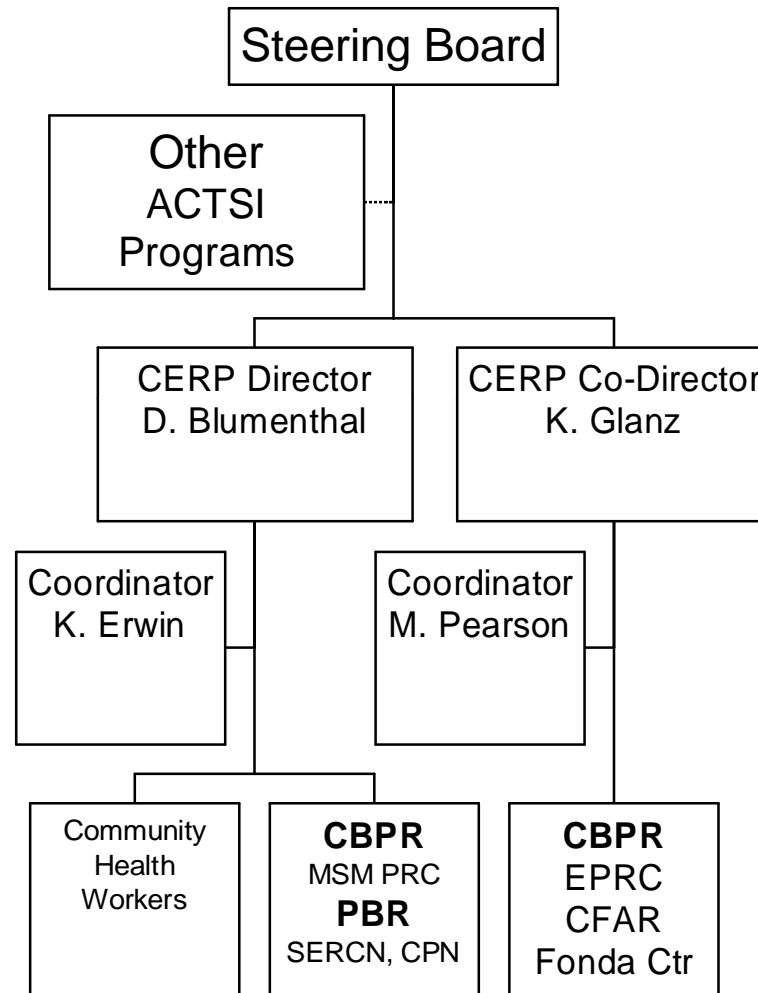



# Community Engagement & Research Program

- Morehouse
  - Prevention Research Center
  - Southeast Regional Clinicians' Network
  - Community Physicians' Network
  - (Many other programs)
- Emory
  - Prevention Research Center
  - Center for AIDS Research
  - Jane Fonda Center
  - (Many other programs)



# CERP



CERP STEERING BOARD		
Role (Name)	Representing	Academic or Community
Steering Board Chair (Community Representative)	TBN	C
CERP Leader (Blumenthal)	Morehouse	A
CERP Co-Leader (Glanz)	Emory	A
CTSA PI (Stephens)	Emory	A
CTSA Co-PI (Ofili)	Morehouse	A
MSM PRC Board Representative (Ella Heard Trammell)	MSM PRC/NPU-Y	C
EPRC Board Representative (Kay Read)	EPRC/SW GA	C
SECRN Representative (Leslyn Wong)	CHC Network	C
CPN Advisory Board Representative	Community Physicians Network	C
CFAR CAB Representative (Linda Felix)	CFAR Communities	C
Community Representative	TBN	C
Community Representative	TBN	C 

# CERP Steering Board

- Establishes policies and conditions under which research can be conducted through the CERP
- Establishes priorities
- Reviews all protocols proposed for implementation in the community using CERP resources (committee)
- Advises and guides research scientists



# Community Engagement and Research Program

- “Research is good, but what do you do with the research after you get it?”

- Ella Heard Trammell

Chair, Morehouse School of Medicine  
Prevention Research Center  
Community Coalition Board

